

Agilent GPC/SEC Software Sample GPC Analysis Report



Agilent Technologies

forward isis

Workspace Details

Workspace name Poly lactide
Location C:\ProgramData\Agilent Technologies\GPC\Workspaces\Poly lactide\
Comments
Created by Administrator at 13:44:31 on 15 June 2015

Sample Properties

Sample name forward isis
File name ICF_27_08_2020-0009.sample
Collected by GPC at 15:16:58 on 27 August 2020
Instrument name Instrument 1

Column Calibration Details

Name August 2020 PSty
Created by GPC at 16:43:58 on 12 August 2020
Last modified by GPC at 16:46:34 on 12 August 2020
Comments GPC Column Calibration created 12 August 2020 by GPC
GPC Column Calibration amended 12 August 2020 by GPC
GPC Column Calibration amended 12 August 2020 by GPC
GPC Column Calibration amended 12 August 2020 by GPC

Calibration Type	Narrow Standard	Curve Fit Used	3
Calibration Curve	$y = -0.0007734x^3 + 0.0323x^2 - 0.8284x + 11.78$		
High Limit MW RT (mins)	11.21667	Low Limit MW RT (mins)	18.10000
High Limit MW (g/mol)	299400	Low Limit MW (g/mol)	580
Flow Rate Marker Name		Flow Marker RT (mins)	0.00000
K (Input) ((10e-5) dL/g)	14.100		
Alpha (Input)	0.700		
Residual Sum Of Squares	0.00531286	Corrected Sum Of Squares	7.33781
Coeff. Of Determination	0.999276	Standard Y Error Estimate	0.029757
Linear Correlation Coeff	-0.999578		

Column Calibration Data Points

Point	Peak Max RT (mins)	MW	Log MW	Point in Use?	Percent Error
1	11.21667	299400	5.48	Yes	4.65
2	11.80000	151700	5.18	Yes	-11.09
3	12.95000	66350	4.82	Yes	8.28
4	13.50000	38100	4.58	Yes	1.29
5	14.20000	19880	4.30	Yes	-2.70
6	15.00000	9920	4.00	Yes	-2.20
7	15.81667	4920	3.69	Yes	-0.06
8	16.60000	2360	3.37	Yes	-3.02
9	17.38333	1260	3.10	Yes	6.36
10	18.10000	580	2.76	Yes	-2.92

Analyst:

Date:

Checked By:

Date:

Agilent GPC/SEC Software Sample GPC Analysis Report



Agilent Technologies

Processing Parameters

Method Last modified by Administrator at 13:44:30 on 15 June 2015
 Using Flow Rate Correction No
 Mark-Houwink K ((10e-5) dL/g) 14.100
 Mark-Houwink Alpha 0.700
 Concentration Detector Used in Analysis RI
 Injection volume (µL) 100.00
 Flow rate (mL/min) 1.00

MW Ranges Method

Calculate MW Ranges No

Percentage Fractions Method

Calculate Percentage Fractions No

Results

Analysed by GPC at 15:59:00 on 27 August 2020
 Comments

Molecular Weight Averages

Peak	Mp (g/mol)	Mn (g/mol)	Mw (g/mol)	Mz (g/mol)	Mz+1 (g/mol)	Mv (g/mol)	PD
Peak 1	6149	5127	6194	7323	8502	7153	1.208

Peak Information

	Start (mins)	End (mins)
Baseline region 1	2.45000	7.10000
Baseline region 2	25.58333	29.85000
Peak 1	14.41667	17.03333

Peak Trace Information

Peak	Trace	Peak Max RT (mins)	Peak Area (mV.s)	Peak Height (mV)
Peak 1	RI	15.56667	832.113	12.360
Peak 1	VS DP	15.50000	748.027	9.002
Peak 1	VS IP	15.65000	26.630	0.551
Peak 1	LS 90°	15.58333	225.864	3.280
Peak 1	LS 15°	15.60000	110.445	2.046

Analyst:

Date:

Checked By:

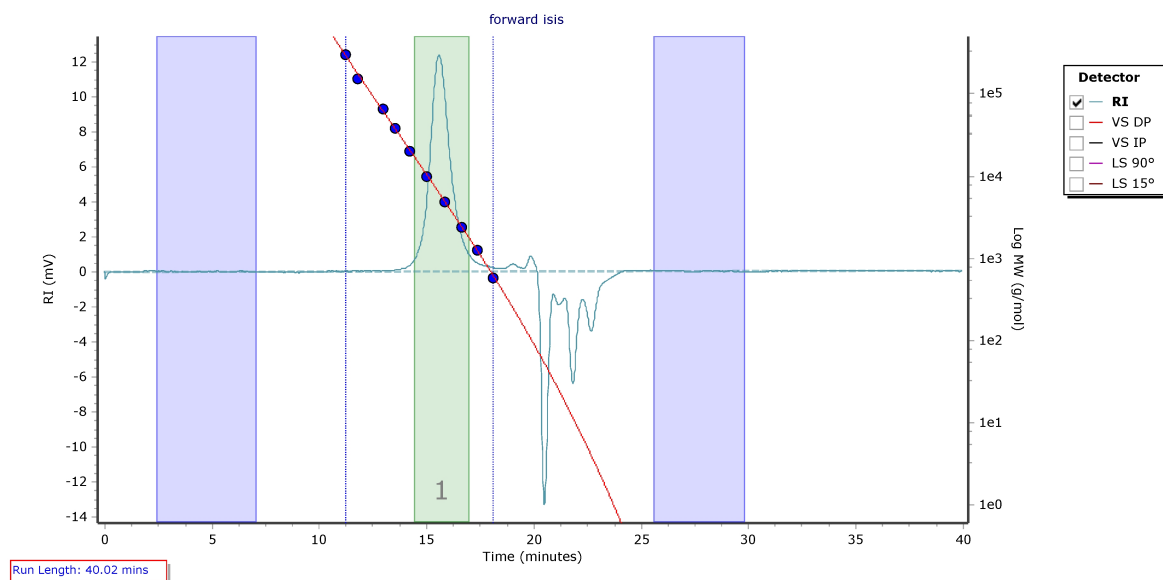
Date:

Agilent GPC/SEC Software Sample GPC Analysis Report



Agilent Technologies

Chromatogram Plot



Analyst:

Date:

Checked By:

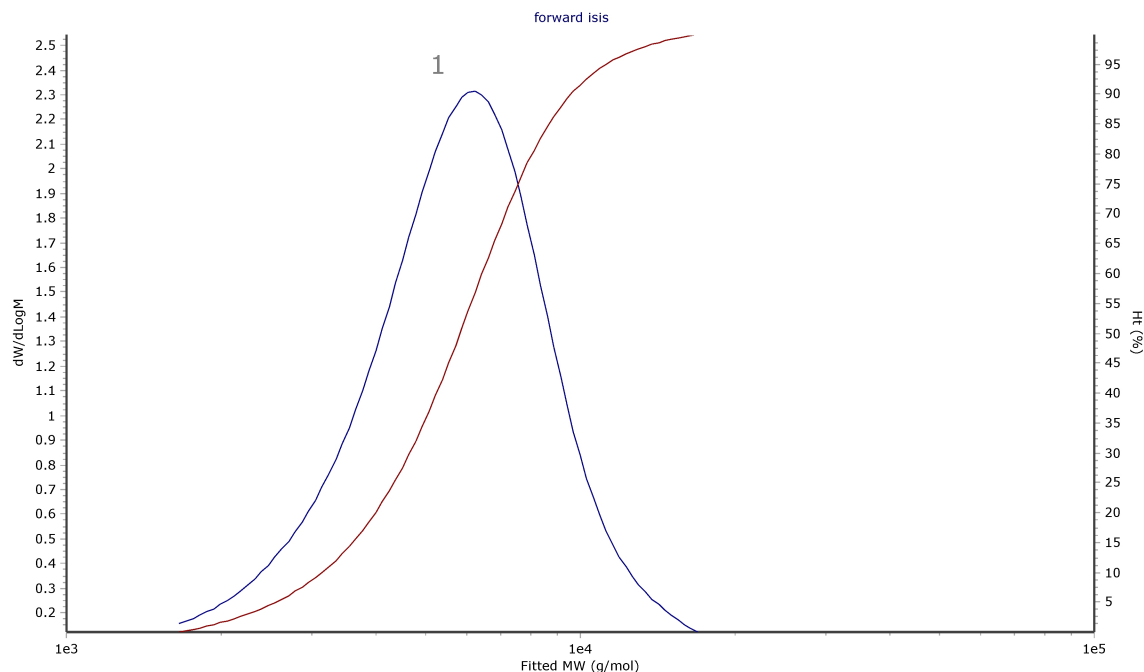
Date:

Agilent GPC/SEC Software Sample GPC Analysis Report



Agilent Technologies

Distribution Plot



Analyst:

Date:

Checked By:

Date: